



SHIELD POWER INDUCTOR CKCBA Series

磁屏蔽电感 CKCBA 系列

● FEATURES 特性

Various high power inductors are superior to be high saturation for surface mounting.
具有高功率、高饱和电流、低电阻特性。

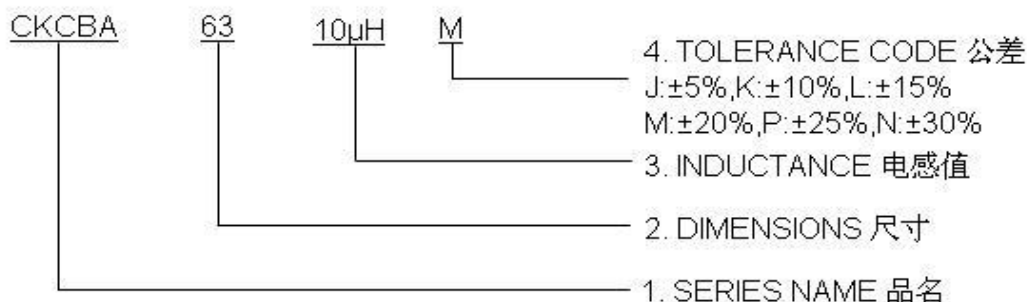


● APPLICATIONS 用途

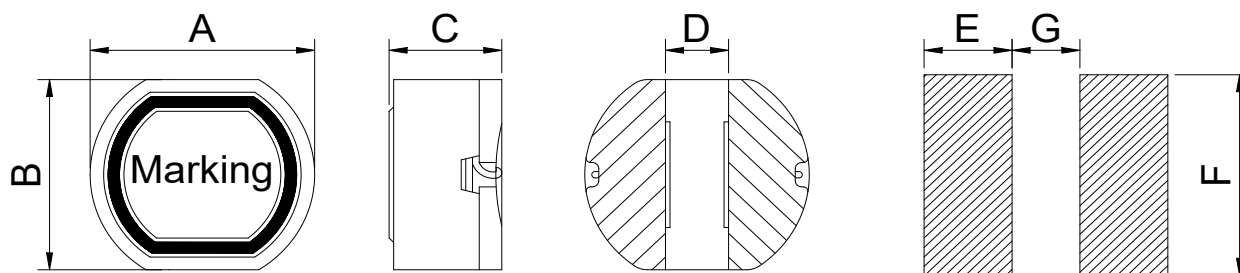
Power supply for TVR,OA equipment, audio, LED television ,
communication equipments, DC/DC converters, etc.

录影机, OA仪器, 音箱, LED电视, 通信设备, DC/DC转换器

● PART NUMBERING SYSTEM 品名系统



● SHAPES AND DIMENSIONS 外形尺寸 (Unit:mm)



Recommended patterns

TYPE(型号)	A	B	C	D	E	F	G
CKCBA63	6.2±0.5	5.6±0.5	3.2±0.5	1.7	2.3	6.0	1.6
CKCBA74	7.8±0.5	7.0±0.5	4.5±0.5	2.0	3.0	7.5	2.0
CKCBA105	10.0±0.5	9.0±0.5	5.0±0.5	2.5	3.75	9.5	2.5

● SPECIFICATION TABLE 规格特性表
CKCBA63

PART NUMBER 品名	INDUCTANCE (μ H) 电感值	DCR (Max) (Ω) 直流电阻	IDC (Max) (A) 额定电流
CKCBA63-10uH/M	10 \pm 20%	0.16	1.20
CKCBA63-15uH/M	15 \pm 20%	0.18	1.00
CKCBA63-22uH/M	22 \pm 20%	0.30	0.80
CKCBA63-33uH/M	33 \pm 20%	0.41	0.60
CKCBA63-47uH/M	47 \pm 20%	0.55	0.50
CKCBA63-68uH/M	68 \pm 20%	0.82	0.42

CKCBA74

PART NUMBER 品名	INDUCTANCE (μ H) 电感值	DCR (Max) (Ω) 直流电阻	IDC (Max) (A) 额定电流
CKCBA74-10uH/M	10 \pm 20%	0.070	1.65
CKCBA74-15uH/M	15 \pm 20%	0.08	1.39
CKCBA74-22uH/M	22 \pm 20%	0.13	1.12
CKCBA74-33uH/M	33 \pm 20%	0.18	0.97
CKCBA74-47uH/M	47 \pm 20%	0.27	0.80
CKCBA74-68uH/M	68 \pm 20%	0.33	0.68
CKCBA74-100uH/M	100 \pm 20%	0.49	0.55
CKCBA74-120uH/M	120 \pm 20%	0.68	0.48
CKCBA74-150uH/M	150 \pm 20%	0.94	0.44
CKCBA74-180uH/M	180 \pm 20%	1.00	0.40
CKCBA74-220uH/M	220 \pm 20%	1.18	0.36
CKCBA74-270uH/M	270 \pm 20%	1.30	0.33

Remark: 1. All test data is reference to 25 $^{\circ}$ C ambient.

2. Inductance Tested at 100kHz,0.25Vrms

3. IDC: DC current at which the inductance drops approximate 20% from its value without current;

4. Operating Temperature : -40 $^{\circ}$ C ~ +125 $^{\circ}$ C(Including self - temperature rise)



CKCBA105

PART NUMBER 品名	INDUCTANCE (μ H) 电感值	DCR (Max) (Ω) 直流电阻	IDC (Max) (A) 额定电流
CKBA105-10uH/M	10 \pm 20%	0.06	2.06
CKBA105-15uH/M	15 \pm 20%	0.07	1.72
CKBA105-22uH/M	22 \pm 20%	0.08	1.42
CKBA105-33uH/M	33 \pm 20%	0.11	1.16
CKBA105-47uH/M	47 \pm 20%	0.14	1.00
CKBA105-68uH/M	68 \pm 20%	0.21	0.85
CKBA105-100uH/M	100 \pm 20%	0.34	0.72
CKBA105-120uH/M	120 \pm 20%	0.37	0.63
CKBA105-150uH/M	150 \pm 20%	0.51	0.55
CKBA105-180uH/M	180 \pm 20%	0.57	0.50
CKBA105-220uH/M	220 \pm 20%	0.78	0.47
CKBA105-330uH/M	330 \pm 20%	1.20	0.37
CKBA105-390uH/M	390 \pm 20%	1.34	0.35
CKBA105-470uH/M	470 \pm 20%	1.50	0.33

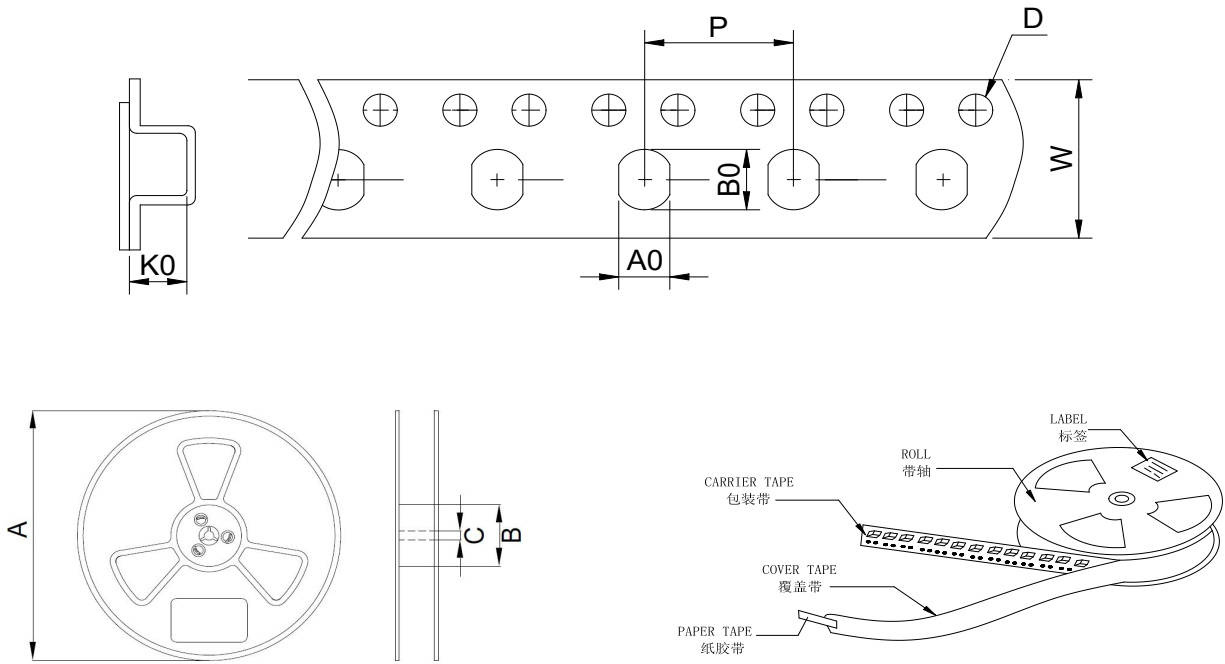
Remark: 1. All test data is reference to 25 $^{\circ}$ C ambient.

2. Inductance Tested at 100kHz,0.25Vrms

3. IDC: DC current at which the inductance drops approximate 20% from its value without current;

4. Operating Temperature : -40 $^{\circ}$ C ~ +125 $^{\circ}$ C(Including self - temperature rise)

● **PACKAGING SPECIFICATION 包装规格**



TYPE(型号)	Tape Dimension 载带尺寸(mm)						Reel Dimension 卷盘尺寸 (mm)			Quantity (Pcs/Reel) 数量 (个/卷)
	W	A0	B0	K0	D	P	A	B	C	
CKCBA63	12.0	6.0	6.5	3.8	1.5	12.0	330	10	13	1500
CKCBA74	16.0	7.6	8.6	5.6	1.5	12.0	330	10	13	1000
CKCBA105	24.0	9.1	10.1	6.1	1.5	12.0	330	10	13	1000